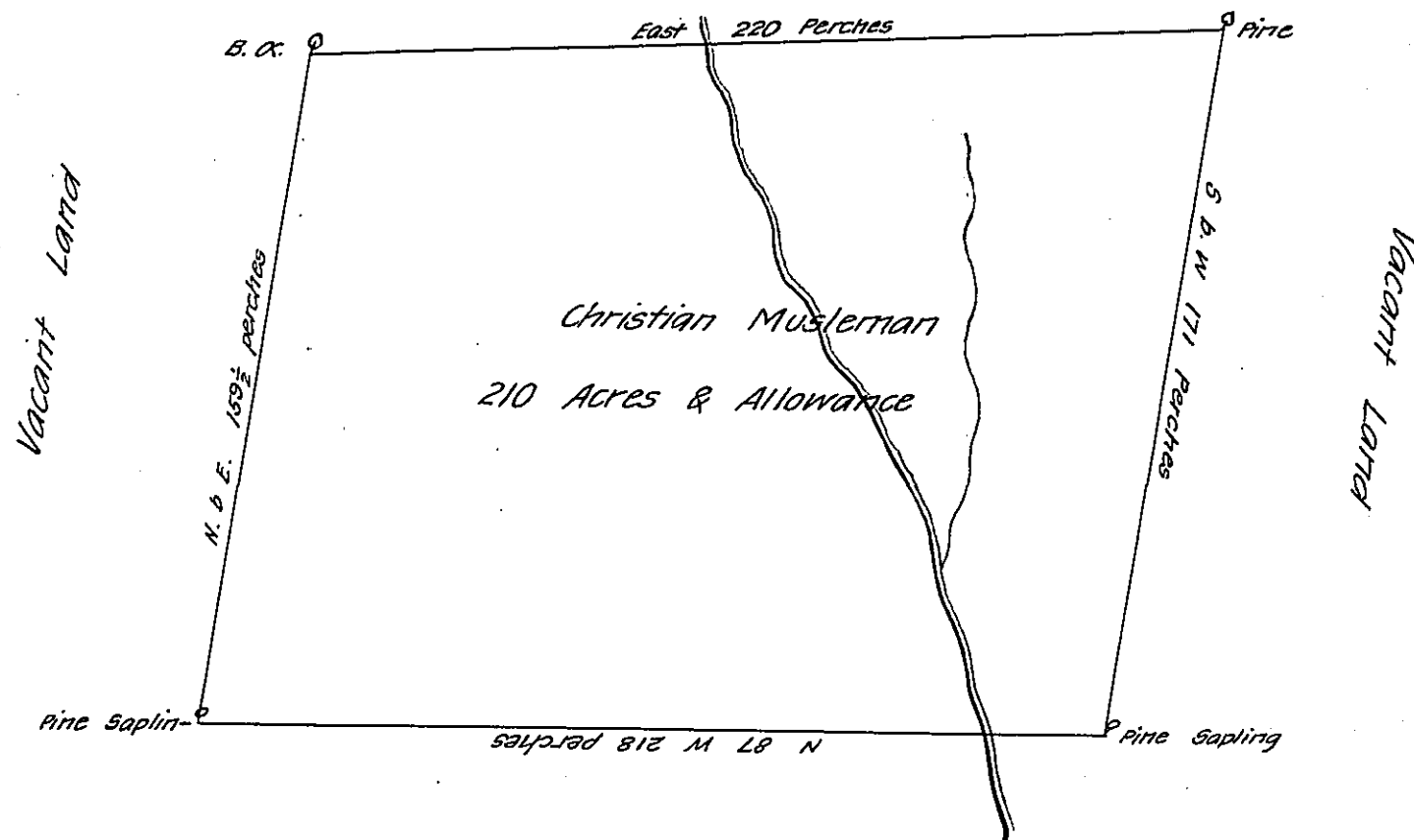


Dividing Ridge



Rid Ridge

Surveyed for Christian Musleman on the 21th day of December 1787 by Bartrem Galbraith Late Deputy Surveyor as appears by his Official Draught Remaining in my Office the above described Tract of land Situate on the Waters of Deerlick Run in Upper Paxton Township Dauphin County Containing two hundred and ten acres and the allowance of Six Pr. Cert for Roads &c. by his Warrant of the tenth day of June 1786

Certified the 24th of May 1803 Thomas Clark D.S.

Samuel Cochran Esquire
Surveyor General Pennsylvania

IN TESTIMONY that the above is a copy of the original remaining on file in the Department of Internal Affairs of Pennsylvania, made conformably to an Act of Assembly approved the 16th day of February, 1833, I have hereunto set my Hand and caused the Seal of said Department to be affixed at Harrisburg, this third day of October 1907

Henry Howell
Secretary of Internal Affairs.